



Edging Station  
**LE-800**



THE ART OF EYE CARE



# Amplify confidence

## Easy to operate, all-in-one capability

The LE-800, our entry-level edger, enhances your lens edging process. Engineered with simplicity in mind, it provides reliable performance from tracing, to blocking, to finishing lenses, and even ease of maintenance. The intuitive user-functionality guarantees quick and easy processing thanks to the operator wizard. The LE-800, with its all-in-one features, is ground breaking as an entry-level edger.

### Models

LE-800



LE-800 with frame tracer (optional)



### Custom-designed frame tracer (optional)

Performance enhancing

#### High curve frame measurement

The on-board tracer confidently handles even high-wrap frames. Controlled tracing pressure assures superb accuracy.

#### Low maintenance design

Vertical tracing offers protection from debris ensuring durability.



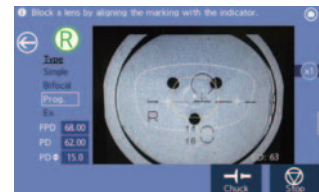


## Solid reliability

# Built-in intelligent blocker

### Simple, accurate blocking

The built-in intelligent blocker performs accurate blocking with simple operation. Exact alignment is available with the high-resolution color touch screen and the image magnification function.



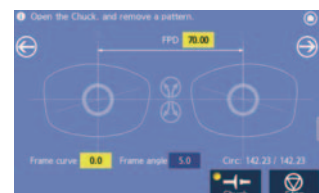
### Shape editor function

The lens can be easily modified to the precise shape design by entering the desired numeric values.



### Shape axis adjustment

The trace data can be adjusted simply by pressing the on-screen arrow buttons in case of a misalignment.



### Shape data memory

The internal memory stores approximately 20,000 shape data files. The more frequently used shapes can be recalled.



## Uncompromising technology

# Precise shape recognition

### Tracer-less technology

3D tracing data can be easily obtained without even using the tracer by simply tracing the demo lens or pattern in the processing chamber.



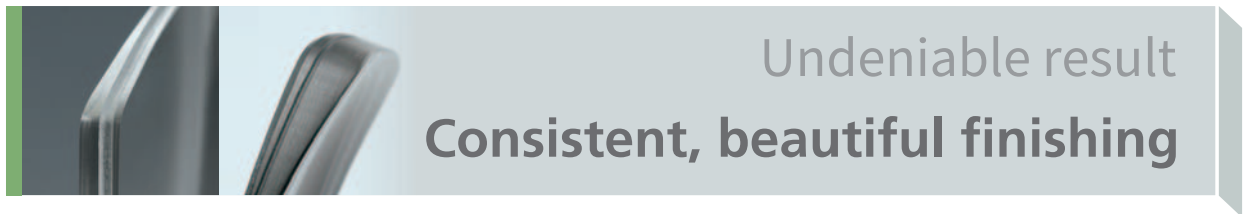
### Robust RMU and LMU

The combination of Radius Measuring Unit (RMU) and Lens Measuring Unit (LMU) traces demo lenses or patterns with precision.



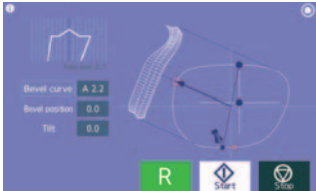
### 3D tracing

In addition to tracing the demo lens circumference, its front curve is measured to obtain 3D tracing data and perform accurate 3D edging.



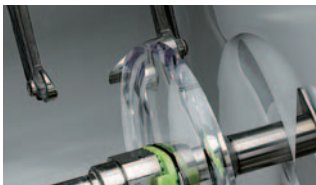
### 3D processing for best fit accuracy

After lens shape measurement, the 3D images are displayed to simulate beveling/grooving.  
The data, such as groove/bevel position, can be easily edited.



### Outer diameter measurement

By measuring the lens diameter, it shortens the overall edging cycle time.



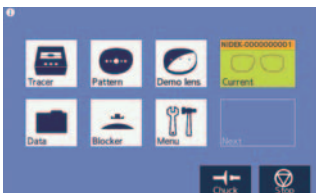
### Grooving and safety beveling wheel (optional)

Grooving and safety beveling combo wheel is compact and dependable.



### 7-inch color LCD touch screen

A touch screen with easy to understand icons and simplified settings, makes it fun to use.



### Smooth operation

Step-by-step processing of wizard mode assists lens edger beginner.  
"Next job" function allows operator to prepare next job during lens processing for more efficient workflow.



### Compact space-saving edger

All necessary functions, tracing, blocking and edging are co-existing in a small, well-organized work space, that even includes a "double-deck" accessory tray.



## LE-800 Specifications

Grinding system	Patternless
Mode*1	Beveling (automatic, guided), Flat edging, Polishing, Grooving (automatic, guided), Frame changing, Soft processing
Setting range	
FPD	30.00 to 99.50 mm (0.01 mm increments)
PD	30.00 to 99.50 mm (0.01 mm increments)
1/2PD	15.00 to 49.75 mm (0.01 mm increments)
Optical center height	0 to ±15.0 mm (0.1 mm increments)
Size adjustment	0 to ±9.95 mm (0.01 mm increments)
Bevel position	0 to ±10.0 mm (0.1 mm increments)
Minimum grinding size*2	
Flat edging	ø22.0 x 19.0 mm / with mini cup (optional) ø22.0 x 17.4 mm
Bevel edging	ø23.0 x 20.0 mm / with mini cup (optional) ø23.0 x 18.4 mm
Safety beveling (flat)*3	ø27.6 x 24.6 mm / with mini cup (optional) ø27.6 x 23.0 mm
Safety beveling (bevel)*3	ø30.2 x 27.2 mm / with mini cup (optional) ø30.2 x 25.6 mm
Grooving	ø22.0 x 19.0 mm / with mini cup (optional) ø22.0 x 17.4 mm
Blocking unit	
Method	Manual blocking
Blocking position accuracy	±0.5 mm
Axis angle accuracy	±1.0°
Demo lens / pattern tracing unit	
Method	Shape measurement using feeler unit
Measuring points	1,000 points
Measurement range	ø22.0 to 76.0 mm (17.4 to 66.0 mm vertically)
Frame tracer (optional)	
Method	Automatic 3D binocular tracing
Measuring points	1,000 points
Measurement range	Shape width : 23.0 to 70.0 mm Shape height : 18.4 to 66.0 mm Frame horizontal width : 113 to 150 mm
FPD measurement	Available
Frame clamping	Manual clamping
Setting of stylus	Switchable between automatic and semiautomatic
Measurement accuracy	Frame tracing ±0.1 mm
Wheel configuration	Type PLB-2R
Water supply system	Pump circulation or direct connection to tap water
Interface	RS-232C - 1 port (for connection of the barcode scanner or tracer) LAN - 1 port (for connection of a server) USB port - 1 port (for USB flash drive only)
Power supply	100 to 120 / 230 V AC, 50/60 Hz
Power consumption	1.0 kVA (100 to 120 V AC), 1.3 kVA (230 V AC)
Dimensions/Mass	543 (W) x 490 (D) x 345 (H) mm / 33 kg 21.4 (W) x 19.3 (D) x 13.6 (H) " / 73 lbs.
Standard accessories	Half-eye lens cup, Double-coated adhesive pad for half-eye lens cup, Dressing stick for glass roughing wheel, Dressing stick for finishing wheel, Dressing stick for polishing wheel, Cup remover, Pattern holder, Calibration jig, Adapter set, Power cord, Spare fuse, Hexagonal wrench (2.0 mm, 2.5 mm, 4.0 mm), Cushion for lens clamp
Optional accessories	Frame tracer, Grooving and safety beveling wheel, Compound kit, Pliable cup set, Mini cup set, USB flash drive, Barcode scanner, Circulation pump and tank

\*1 Grooving and polishing cannot be performed for glass lenses.

\*2 The standard cup is half-eye lens cup.

\*3 Safety beveling is available with the grooving and safety beveling wheel (optional).

Specifications and design are subject to change without notice.



**HEAD OFFICE**  
**(International Div.)**  
34-14 Maehama,  
Hiroishi-cho, Gamagori,  
Aichi 443-0038, JAPAN  
TEL: +81-533-67-8895  
URL: www.nidek.com  
**[Manufacturer]**

**TOKYO OFFICE**  
**(International Div.)**  
3F Sumitomo Fudosan Hongo  
Bldg., 3-22-5 Hongo, Bunkyo-ku,  
Tokyo 113-0033, JAPAN  
TEL: +81-3-5844-2641  
URL: www.nidek.com

**NIDEK INC.**  
2040 Corporate Court,  
San Jose, CA 95131, U.S.A.  
TEL: +1-408-468-6400  
+1-800-223-9044  
(US Only)  
URL: usa.nidek.com

**NIDEK S.A.**  
Europarc,  
13 rue Auguste Perret,  
94042 Créteil, FRANCE  
TEL: +33-1-49 80 97 97  
URL: www.nidek.fr

**NIDEK TECHNOLOGIES S.R.L.**  
Via dell'Artigianato,  
6/A, 35020 Albignasego (Padova),  
ITALY  
TEL: +39 049 8629200/8626399  
URL: www.nidektechnologies.it

**NIDEK (SHANGHAI) CO., LTD.**  
Rm3205, Shanghai Multi  
Media Park, No.1027 Chang  
Ning Rd, Chang Ning District,  
Shanghai, CHINA 200050  
TEL: +86 021-5212-7942  
URL: www.nidek-china.cn

**NIDEK SINGAPORE PTE. LTD.**  
51 Changi Business Park  
Central 2, #06-14,  
The Signature 486066,  
SINGAPORE  
TEL: +65 6588 0389  
URL: www.nidek.sg