



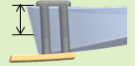



TMA Accent Rings



TMA Accent Rings | Glazing

optical lens Base 5 recommended, but also other Base curves possible
Silhouette plier purple and BLS 58/97/98



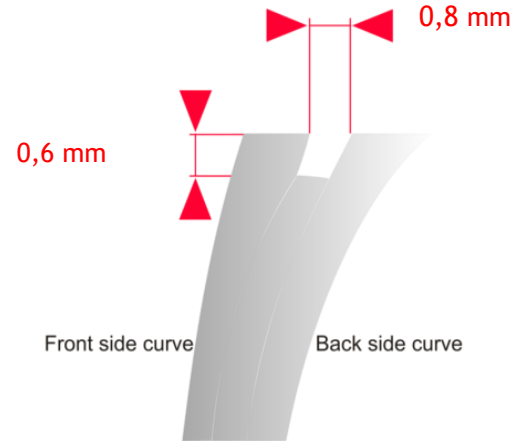
BLS 58 STANDARD	BLS 97 „kurz“	BLS 98 „lang“
Standard Verglasung 	dünne Gläser 	dicke Gläser 
dicke ↓ 2,0 - 6,5 mm	↓ 1,3 - 3 mm	↓ 6 - 9,5 mm
		
∅ 1,4 mm	∅ 1,4 mm	∅ 1,4 mm

TMA Accent Rings | Glazing

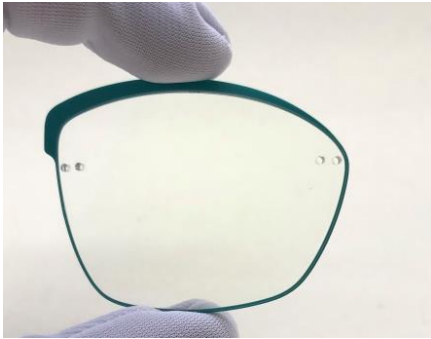
We recommend optical hi index lenses 1,6 in base curve 5, while other base curves or higher lens index would also be possible.

Groove depth: 0,6 mm | Groove width: 0,8 mm

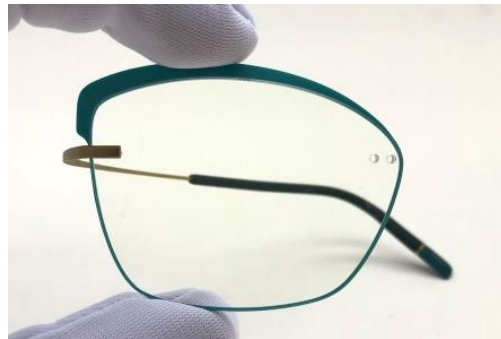
IN-LINE GLAZING



TMA Accent Rings | Glazing Procedure



1. Mount lens ring

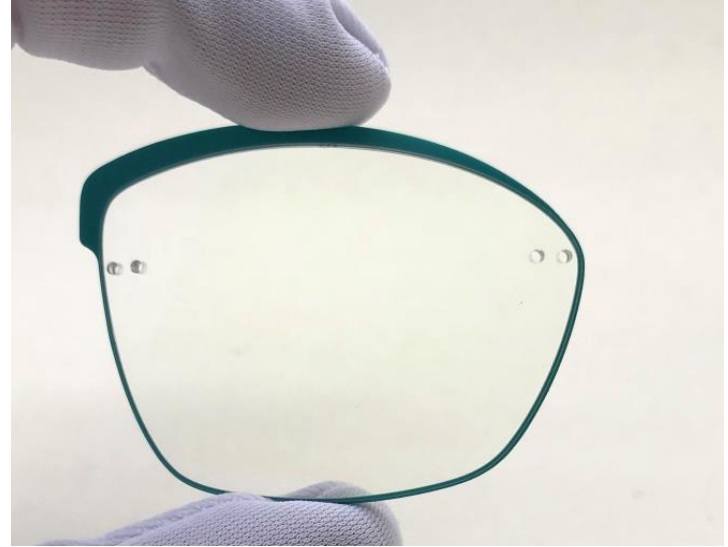


2. Mount frame parts



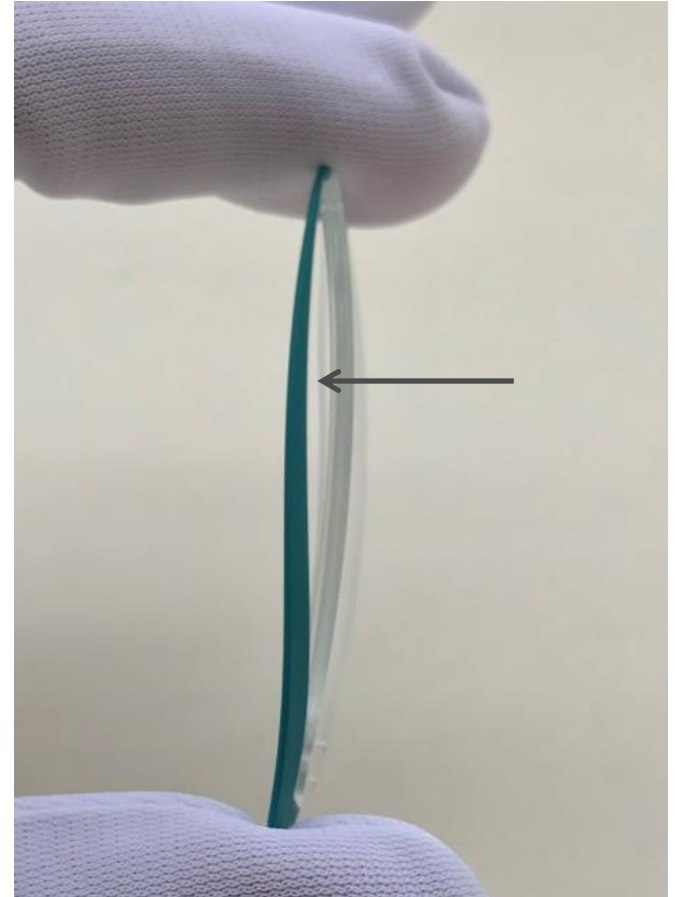
TMA Accent Rings | Mounting Accent Ring

Always place the Accent Ring into the groove from the front. Start at the curve with the smallest radius.



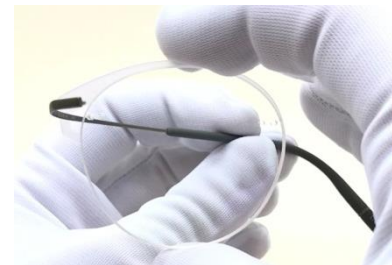
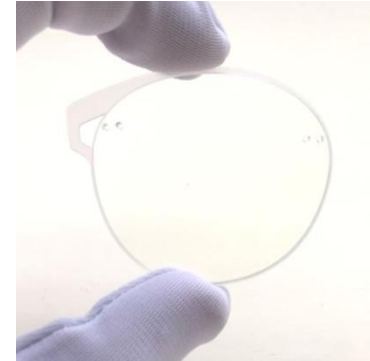
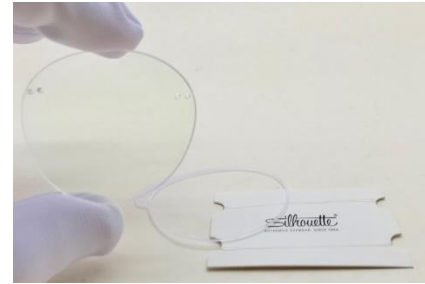
TMA Accent Rings | Accent Ring Disassembly

Take the Accent Ring out of the groove backwards in the upper section and remove it.



TMA Accent Rings | Special Case Shape FV

Before mounting the Accent Ring, make sure to place the rubber ring (MH3) into it.
To be able to mount the temple after inserting the Accent Ring, the temple must be threaded through the loop of the Accent Ring.

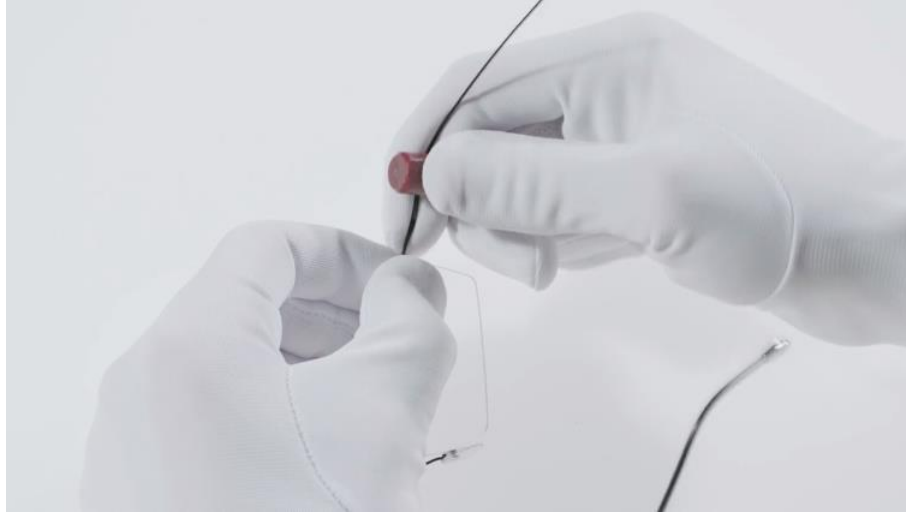


TMA Accent Rings | Inclination



1. Open the temple.
2. Hold lens mounting firmly with the mounting pliers.
3. Hold end piece firmly and adjust inclination into the required position.

TMA Accent Rings | Temple opening enlarge



Hold lens fixation firmly with your fingers and use the Red-Multi-Tool to enlarge the temple opening

TMA Accent Rings | Temple opening reduce



Hold lens fixation firmly with your fingers and use the Red-Multi-Tool to reduce the temple opening.

TMA Accent Rings | Adjustment



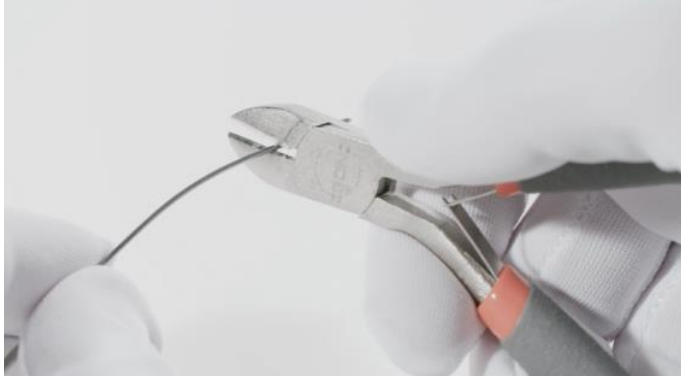
Adjust the temple to the ear shape with large curves.
During temple-end adjusting do not put pressure on
the temple tip

TMA Accent Rings | Temple shortening



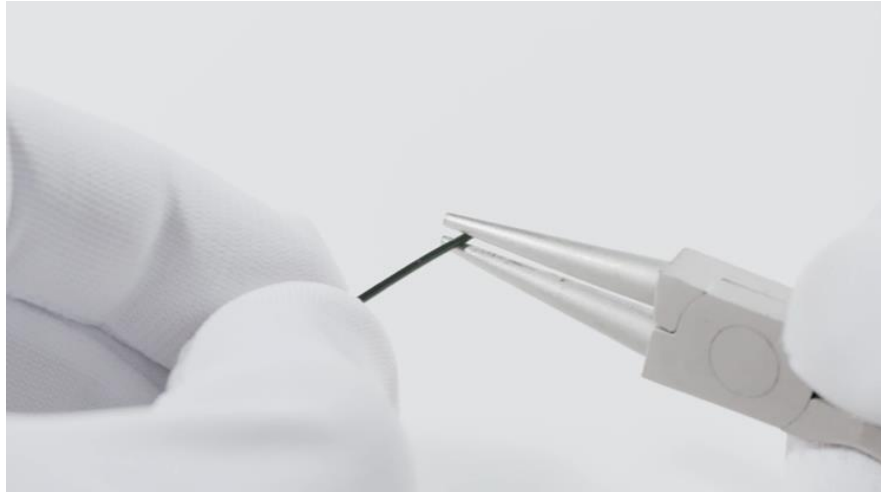
Pull off temple end

TMA Accent Rings | Temple shortening



1. Shorten titanium wire with metal-diagonal cutter
2. File down sharp edges and burrs.

TMA Accent Rings | Temple shortening



Squeeze titanium wire with round pliers at the very end to ensure the stability of the temple end.

Silhouette®

AUTHENTIC EYEWEAR. SINCE 1964.